

Rear Door Base Unit Installation Instructions

P/N 210579.1: 2015+ Ford Transit Rear Door Base Unit, LOW ROOF

Before you begin:

- *Stainless steel hardware may bind together when tightening — apply an anti-seize assembly lubricant to the threads of each bolt before assembly.*
- *This installation requires two or more people*

Required Tools:

- Standard and metric wrench set
- Standard and metric socket set
- Torx bit set
- Drill or impact driver
- Isopropyl Alcohol
- Baby Soap or Dish Soap
- Spray Bottle
- Clean Rag
- Squeegee (or old credit card)



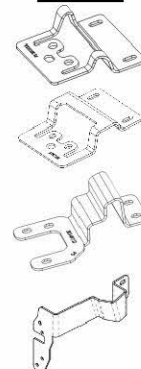
Included Hardware:

P/N	Description	Quantity
70344	5/16"-18 x 1" Button Head Bolt, BLACK OXIDE	4
70446	5/16"-18 x 1 ¼" Button Head Bolt, BLACK OXIDE	4
70448	3/8" ID Washer, 1/8" THK BLACK OXIDE	4
70345	5/16" ID Washer, BLACK OXIDE	16
70346	5/16"-18 Nylon-Locking Nut, BLACK OXIDE	8
70094	¼"-20 x ¾" Button Head Bolt	4
70008	¼"-20 Nylon-Locking Nut	4
70009	¼" ID Washer	8
70437	M6-1.0 x 16mm, Button Head Bolt	3
70246	Antiseize Bolt Lubricant Packet, 2g	1
400999	Impact Resistant Protective Tape	18"

Additional Parts:

PN	Description	Quantity
301513 / 350659	Upper Hinge Bracket, Low Roof , Passenger's Side	1 ea
301250 / 350657	Lower Hinge Bracket	1 ea
301497 / 350644	Inner Driver Door Bracket, Passenger	1 ea
301255 / 350648	Inner Passenger Door Bracket, Upper	1 ea

Picture



Base Unit Rack Installation:

1. Cut the supplied protective tape into one - 6" section and one - 3" section. Round all corners.

PRO TIP: Dry fit each bracket to verify shape and location of protective tape before cutting. Be sure to cut tape in correct orientation, with white backing towards vehicle.

2. Apply the protective tape to each location, one at a time, using the following wet application technique described below.
3. Prepare the surface for protective film application (wet application technique):
 - a. Clean the area around each hinge with isopropyl alcohol and rag.
 - b. Wash your hands thoroughly.
 - c. Do not apply in direct sunlight
 - d. Apply in temperatures above 60°F.
 - e. Create two separate wetting solutions:
 - i. Soap/water: ~95% water / ~5% soap
 - ii. Alcohol/water: ~75% water, ~25% isopropyl alcohol
4. Spray the surface thoroughly with soap/water solution and do not wipe down surface.
5. Remove the liner from the protective tape while spraying the adhesive side with soap/water solution.
6. Apply the protective tape to the outside of the door at each location where the brackets contact the vehicle (Figure 1). At each location, leave approximately 1/2" of tape overhanging to be wrapped around the edge of the door.



Figure 1: Locations of Protective Film Application

7. Use squeegee all air bubbles out starting at adhered edge.
8. Use the alcohol/water solution to speed up adhesion at one edge (lift section up and spray adhesive side) as needed.
9. Wrap remaining protective tape around the door underneath hinge if possible.
10. Install the upper hinge bracket by:
 - a. Have someone help support the weight of the door throughout the entire bracket installation.
 - b. Remove the three bolts connecting the hinge to the door.
 - c. Rotate hinge enough to allow the bracket to be installed around the hinge (Figure 2).

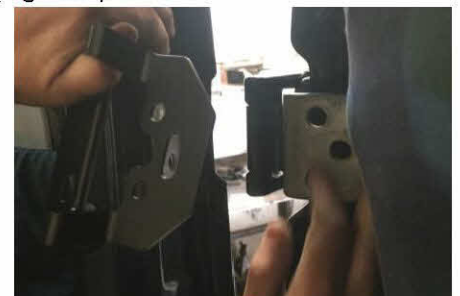


Figure 2: Upper Hinge Rotated Away from Door

- d. Install the hinge around the hinge in the correct orientation (Figure 3).



Figure 3: Bracket Installed Over Factory Hinge

- e. Rotate the hinge and bracket back into position against the door (Figure 4).



Figure 4: Hinge Placed Back into Position

- f. Use the factory hardware to reinstall the hinge/bracket (Figure 5).

PRO TIP: When reinstalling factory hardware, try to match up the location of the hinge to the door using the unpainted 'shadow' as a guide to ensure proper alignment of the door on the van. Misalignment of the hinges can lead to fitment issues at the inner door latch.

PRO TIP: Be sure to center the bracket around the hinge and verify clearances around the hinge while opening and closing the door.



Figure 5: Inside View of Installed Upper Hinge

- 11. Install the lower hinge bracket by repeating the process detailed in Step 10 (reference Figure 6).



Figure 6: Inside View of Installed Lower Hinge Bracket

- 12. Remove the three (3) factory torx bolts holding on the passenger's side latch. **NOTE:** Prevent the latch from falling into the door by holding the inside latch (Figure 7 & 8).



Figure 7: Inside Latch on Passenger Door

