



Aluminess Products Inc  
9402 Wheatlands Ct. #A  
Santee, CA 92071  
619-449-9930

## **FRONT BUMPER INSTALLATION INSTRUCTIONS** **2011, Ford F-Series Truck**

### **Please read before beginning**

- *Stainless steel hardware may bind together when tightening—It is recommended that you apply an anti-seize assembly lubricant to the threads of each bolt before assembly*
- *This installation requires two people*
- *If running a roller fairlead receiver plate will need a 3/8" spacer*



### **Required tools**

- Standard wrench set
- Leveling tool

### **Included hardware**

### **Quantity**

- |   |    |
|---|----|
| • Mounting hardware   |    |
| ○ 70036 - 1/2-13 x 1 1/2" Hex head bolt grade 8               | 16 |
| ○ 70034 - 1/2-13 Nuts, stainless steel with nylon insert      | 16 |
| ○ 70035 - 1/2 Washer  | 32 |
| • 400511- Winch, Fairlead Cover                               | 1  |
| ○ 70008- 1/4-20 Nylock Nuts SS                                | 2  |
| ○ 70039- 1/4 x 7/8 Fender Washer SS                           | 4  |
| ○ 70060- 1/4-20 x 1" Button Head Bolt SS                      | 2  |
| • 400503.4 - Keys, tool box lock set                          | 1  |
| • 350106- 2011 Ford SD Front Bumper Mounting Brackets ( pair) | 1  |



## **Assembly instructions**

1. Remove Stock Bumper
  - a. Remove the 2 bolts on the backside of the bumper, repeat on the other side.



- b. Remove plastic clips holding air scoop to bumper.

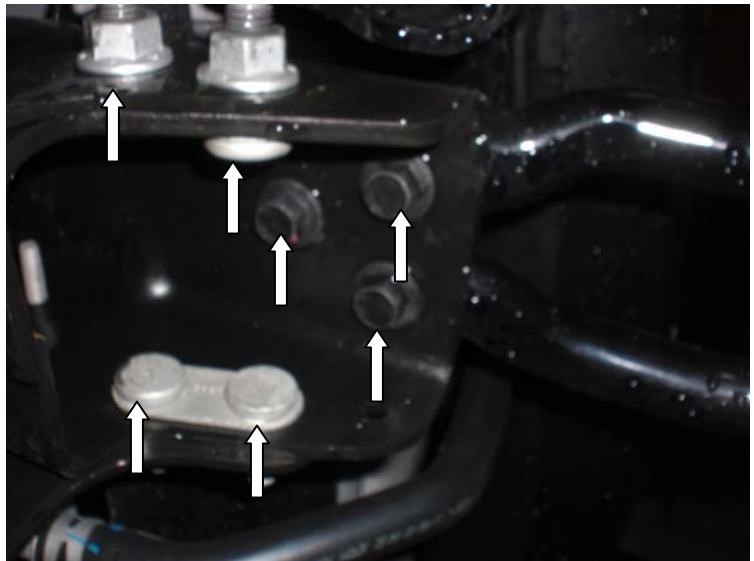




2. Remove the 4 bolts visible on the front of the bumper



3. Remove stock bumper from vehicle.
4. Remove Factory tow hooks and frame scoops from both sides





5. Attach the steel mounting Bracket to the frame horns using the provided 1/2-13 x 1 1/2" bolts and nuts. (each bolt should have a washer on both the head and the nut sides) 2 Bolts will attach at the top and one will attach in the side.

Passenger Side



Driver Side



1 Bolt in Side



6. Hold Aluminess bumper up in position and put the 6 1/2" bolts through the slotted holes in the toolbox into the steel mounting brackets slotted holes. (each bolt should have a washer on both the head and the nut sides)
7. Tighten the nuts down so that the bumper is held up but can still be moved
8. Check that the bumper is level and aligned with the center of the truck
9. Tighten down all of the fasteners, and check again after driving 100 miles to make sure everything is still secure