

REAR BUMPER INSTALLATION INSTRUCTIONS
2007-2018 Mercedes Sprinter

Please read before beginning

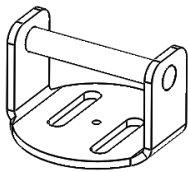
- Stainless steel hardware may bind together when tightening—It is recommended that you apply an anti-seize assembly lubricant to the threads of each bolt before assembly
- This installation requires two people

Required tools

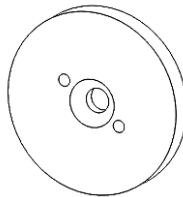
- Standard and metric wrench set
- Allen wrench set
- Torx-head (6-point star) wrench set
- Flat-head screwdriver (used to remove stock plastic fasteners)
- Phillips-head Screwdriver



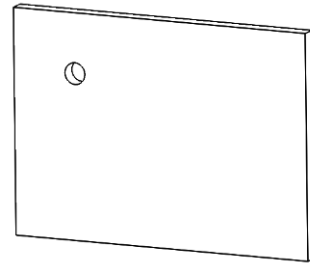
Included Parts/Subassemblies



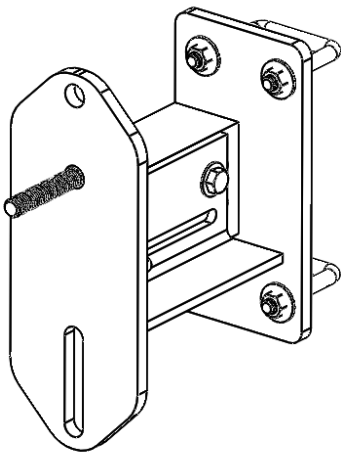
x2
Door Latch Pin



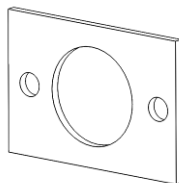
x2
Door Latch Pin Mounting Plate



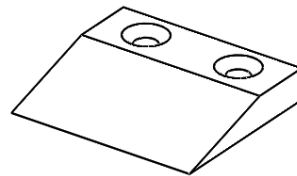
x2
Inner Door Mounting Plate



x1
Tire Plate Assembly



x4
Parking Sensor Brackets (if applicable)



x2
Plastic Support Ramp (pre-installed)

Included Hardware

Quantity

• 70185—7/16-14 x 4 ½" Hex Head bolts	8
• 70056---7/16-14 Nylock Nuts	8
• 70057---7/16 Flat Washers	16
• Upper Door Latch Assembly (pre-assembled with the below hardware)	
○ 70030—3/8-16 x 1.5" Countersunk Head Bolt	2
○ 70024---3/8-16 Nylock Nuts	2
○ 70028---3/8" Flat Washers	2
○ 70223—1/4-20 x .5" Button Head	4
○ 70010 – Star Locking Washer	4
• Tire Plate Assembly (pre-assembled with the below hardware)	
○ 70029 – 3/8-16 x 1 ¼" Hex Head Bolt, SS	2
○ 70028 – 3/8" Flat Washers	8
○ 70024 – 3/8-16 Nylock Nut	6
○ 70704 – 2 ¼" x 3" Square U-Bolt, SS	2
• Antiseize Packet, 2g	1

Assembly instructions

1. Your new Aluminess Rear Bumper will work with the factory plastic bumper. This is to ensure proper function of lane change sensors if your vehicle is equipped with them.
2. If you have a factory step bumper or a receiver you will need to remove them when you are completing the following steps to install the Aluminess Hitch. The plastic step on step bumpers will need to be trimmed off to fit your new Aluminess Bumper.
3. Your Aluminess bumper and hitch will most likely ship completely assembled. If it is not fully assembled then bolt the bumper to the hitch using the ½" hardware going from the back of the bumper into the hitch, and the 3/8" hardware going from the top of the bumper to the top of the swing arm plate.
 - a. Ensure that you mount your license plate and license plate light *before* you install the bumper, as it will be near impossible to install the license plate after the bumper is installed.
4. With someone assisting you by holding up the trailer hitch and bumper assembly, mount the hitch to the frame using the 7/16" Bolts. If your Sprinter has the factory backing plate you can retain it and use it to shim the spacing of the bumper blades to fit snugly between the vehicle's frame and the Aluminess bumper. It is important that the bumper fits snugly between the frame rails for proper alignment of the swing arms once everything is tightened. If the bumper fits snugly on the vehicle without the backing plates used as shims, the backing plate can then be used with the washers on the inside of the frame.
 - a. The provided 7/16" bolts **must be used** to ensure proper alignment on the vehicle.
 - b. Some sprinters have only 3 bolts supporting the hitch in which case a 4th hole will need to be drilled. Fasten down the provided bolt for this additional hole that needs to be drilled.
5. You may have to push the exhaust out of the way in order to slide the passenger side bracket assembly, so **make sure that the car is off, and wait an ample time after running the engine to ensure that the exhaust pipe is cold— otherwise you risk burning yourself!**



Figure 2: Aluminess Hitch with Factory Backing Plate on the Inside of the Frame

6. Make sure the bumper is slid as far to the rear of the vehicle as possible. You will also need to keep the bolts loose at this time so that the bumper can pivot forward and back.
7. You will now remove the interior door panel on the back door to gain access to the magnet mounting bolt. To do this gently pry around the corners of the plastic to pop it off the fasteners.
8. With the door panels removed you will have access to the door magnet bolt on the Driver Side. Remove the door magnet.
9. Replace the magnet with the supplied Aluminess Latch Pin Mounting Plate that has the countersunk hole in the middle of it. It helps to have the latch pin attached to the mounting plate so you can align the pin horizontally when installing it on the door. This mounting plate will bolt through the door and the supplied Inner Door Mounting Plate.
10. On the passenger side you will need to remove the torx bolts that hold on the door handle before you can access the door magnet bolt.
11. Once the latch pin is sitting horizontal you can snug the 3/8" bolt on the inside of the door.
12. You can now put the door panels back on the van door. If any of the fasteners were left in the door you will need to remove them and slide them into the door panel slots before you can snap the door panel back on.
13. With the Latch Pin in place on the door you can close the van doors and close the swing arms on the bumper.
14. Make sure the latch pin is loose on the Latch pin mounting plate so that it can slide up and down.
15. You can now pivot the bumper towards the van until the latch on the swing arm engages with the latch pin on the door. Once the latch is engaged with the latch pin the bumper is aligned correctly.
16. Tighten all of the 7/16" bolts that hold the hitch to the frame to 63 ft-lbs.



17. With 7/16" bolts tightened, the bumper is now locked in place. You can open the swing arms and tighten the latch pin that is mounted to the door.
18. If you have a hitch wiring electrical box on your vehicle, you can bolt it to the front face of the Aluminess bumper with the original hardware that mounted it to the stock hitch. There are two holes on either side of the provided receiver hitch. You can bolt the electrical box through one of these holes.
19. It is important to keep the latch holding the swing arm to the door when the vehicle is in motion. This upper support helps keep everything stable and solid.
20. When installing your tire to the tire rack swing arm (if applicable), be sure to place the tire so that it rests on the two support arms before tightening anything down (**see Figure 3**)
21. The bumper is now installed—check the mounting hardware after 100 miles of driving to ensure that nothing has come loose due to vibration



Figure 3. Rest tire on both support arms (before tightening the lugs or ubolts down).