



# Roof Rack Installation Instructions

Ford, Transit, 2015+, Roof Rack : 210410; 210410.1;210411.1; 210411.2; 210411.3

## Before you begin:

- *Stainless steel hardware may bind together when tightening – apply an anti-seize assembly lubricant to the threads of each bolt before assembly.*
- *This installation requires two people.*
- *Unless otherwise specified, refer to the general torque value at the end of the instructions for specified torque values*

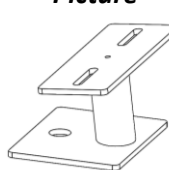


## Required tools:

- Standard wrench set
- M8 x 1.25 tap (recommended)
- Silicone sealant

## Included Hardware:

**PRE-PACKED KIT: 350690 (6-Foot)**

PN	Description	Qty.	Picture
350721	Roof Rack Mounting Brackets	6	
301309	Pre-Cut Rubber Pads	6	
70219	M8-1.25 x 40mm 8.8 Hex Bolt, SS	6	
70435	5/16" ID SS Lock Washer	6	
70020	5/16" ID SS Flat Washer	6	
70027	3/8" ID SS Washer (Thick)	6	
70008	1/4"-20 SS Nylock Nut	12	
70009	1/4" ID SS Flat Washer	24	
70318	1/4"-20 x 1" SS Hex Head Bolt	12	
70246	Antiseize Packet, 2g	1	



**Installation Instructions:**

1. Begin by removing the rubber plugs from the roof of the vehicle. Ford sometimes paints over these so it may take some prying to get them off. (Reference Figure #1)



**Figure 1: Factory Plug**

2. There is a threaded hole in the roof underneath each of these rubber plugs. They are not necessarily in the center of the plug. If there is overspray in the threads, they must be cleaned out by running a tap through them (M8 x 1.25 tap).
3. Position the provided rubber insulating pads onto each mounting bracket (Reference Figure #2)



**Figure 2: Rubber Pad**

4. Insert the 5/16" lock washer, 5/16" flat washer, and the 3/8" thick washer onto each of the M8 x 1.25 bolts.
5. Run a bead of silicone around the hole of the bracket on the bottom of the rubber pad (Reference Figure 3A) . In addition, place a small dab of silicone on the threads of the provided M8 x 1.25 hardware. Be sure to place the necessary washers onto the bolt prior to applying the silicone. (Reference Figure 3B for washer position/orientation)



(A)



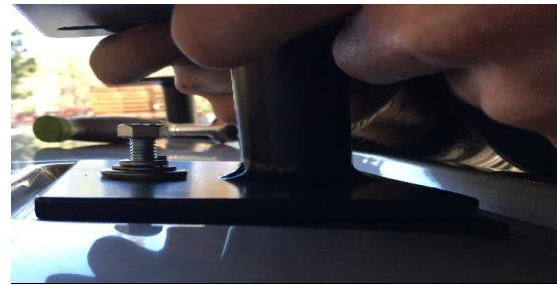
(B)

**Figure 3: Silicone Application on Pad (A) and on Bolt (B)**

6. Place the bolt with the dab of silicone through the mounting bracket with the rubber insulation pad facing down (Reference Figure #4A) . Keep the bracket exactly on the center of the hole and firmly place the mounting bracket onto the roof to ensure a good seal. (Reference Figure #4B) Note: If the threads are slightly off center, it's OK because the hole in the mount is the same size.



(A)



(B)

**Figure 4: Installation onto Roof: Silicone Bead Underneath (A) and Bolt Installation (B)**

7. The mounting bracket is built with an angle to it to accommodate for the roof angle. Make sure to install the mount so that the top plate of the bracket is level.
8. Do not completely tighten the mounting bracket to the roof at this time – this will assist in locating all the bolts.
9. Repeat the mounting bracket installation process for the remaining mounting points on the vehicle.
10. Have some friends help you lift the rack on top of the vehicle and set the roof rack feet on to the mounting brackets.
11. You can now use the 1/4"-20 bolts, washer, and nuts to loosely fasten the roof rack feet to the mounts already installed in the previous steps.
12. Once all of the hardware is in place, you can make minor adjustments to the rack so it sits on the roof to your liking.
13. Once the rack is in a spot where you like it you can tighten all of the hardware.
14. As a final seal, run another bead of silicone around the mounting bolts on each foot to ensure water cannot get into the roof. (Reference Figure #5)



**Figure 5: Final Silicone Seal**

15. Your roof rack is now installed. Check all fasteners for fitment after 50 miles of driving, and periodically thereafter. Enjoy!

<b>General Torque Values</b>			
<b>Size</b>	<b>Stainless Steel</b>	<b>Zinc</b>	<b>Grade 8</b>
#6-32	10 lb-ft	--	--
#8-32	18.4 lb-ft	--	--
#10-32	26.6 lb-ft	--	--
1/4"-20	5.3 lb-ft	7.8 lb-ft	9 lb-ft
5/16"-18	10.9 lb-ft	16 lb-ft	18 lb-ft
3/8"-16	19.4 lb-ft	28.3 lb-ft	33 lb-ft
7/16"-14	31 lb-ft	45 lb-ft	52 lb-ft
1/2"-13	47 lb-ft	69 lb-ft	80 lb-ft
M6	4.7 lb-ft	5.8 lb-ft	--
M8	11.3 lb-ft	14.1 lb-ft	--
M10	22.3 lb-ft	27.9 lb-ft	--
M12	38.9 lb-ft	48.7 lb-ft	--



Aluminess Products, Inc. (Aluminess) Warranty

1. Lifetime Warranty. Aluminess provides a lifetime warranty of its products to the original retail purchaser provided such products are installed correctly according to the official Aluminess installation instructions. Any modification to the original product design, function or use of any Aluminess products will void the Aluminess warranty. Aluminess will have sole discretion to determine warranty eligibility for any and all Aluminess products sold to any purchaser.
2. Limited Remedies. Subject to any limitations and exclusions described herein, and subject to Aluminess' determination of warranty eligibility, Aluminess will remedy defects in product materials and/or workmanship of any product by repairing or replacing such defective product, which shall be within Aluminess' sole discretion, without charge for parts or labor. Aluminess may elect in its sole discretion not to replace a defective product and issue the purchaser a refund equal to the purchase price of any defective product or purchaser may elect to receive a credit (equal to such refund) toward the purchase of new Aluminess products. Repair or replacement of a defective product or providing a refund or credit to purchaser will be purchaser's exclusive remedy under this warranty. Damage to a purchaser's vehicle, cargo and/or any other person or property is expressly excluded from the Aluminess warranty.
3. Modification. Aluminess products are designed to be mounted to factory equipped vehicles. Aftermarket additions to such vehicle may or may not require modification of an Aluminess product. The Aluminess warranty does not extend to any Aluminess products that are modified to fit around other otherwise accommodate or be compatible with any aftermarket vehicle accessories or alterations. Aluminess does not guarantee fitment with any other aftermarket accessories or modified vehicle, and it is up to purchaser to determine fitment prior to purchasing any Aluminess product.
4. Damage. Damage to Aluminess products due to normal wear and tear, including, but not limited to, cosmetic issues and superficial scratches, or structural damage to an Aluminess product in connection with any vehicle collisions or other structural degradation in connection with the use of such vehicle (on road or off road) will not be covered by the Aluminess warranty. Additionally, any product user's misuse, neglect, overloading, improper maintenance or improper installation or repair of any Aluminess products are not covered under the Aluminess warranty.
5. Use of the Products. Aluminess products are designed for off road vehicle use. Installing Aluminess products on a vehicle may exceed the factory designed capabilities of such vehicle and could potentially lead to vehicle damage. Aluminess will not be responsible for any damage caused to a purchaser or user's vehicle or any vehicle accessories caused by the use of any Aluminess products. It is to the sole responsibility of purchaser to inspect and ensure that the intended vehicle and Aluminess products are suitable and compatible for travel on road and off road. No seller nor any manufacturer of Aluminess products will be liable for any loss, damage or injury directly or indirectly arising from the use of any Aluminess products. Before using any Aluminess products, the purchaser or user will determine the suitability of the product(s) for their intended use(s) and the purchaser or user shall assume all responsibility and risk in connection therewith.
6. DISCLAIMER. THE ALUMINESS WARRANTY IS EXPRESSLY MADE IN LIEU OF ANY AND ALL OTHER WARRANTIES, AND EXCEPT FOR THE ALUMINESS WARRANTY SET FORTH HEREIN, ALUMINESS MAKES NO WARRANTY WHATSOEVER WITH RESPECT TO ANY ALUMINESS PRODUCT, INCLUDING ANY WARRANTY OF MERCHANTABILITY AND FITNESS FOR A PARTICULAR PURPOSE, WHETHER EXPRESS OR IMPLIED BY LAW, COURSE OF DEALING, COURSE OF PERFORMANCE, USAGE OF TRADE, OR OTHERWISE. EXCEPT FOR PURCHASER'S LIMITED REMEDIES SET FORTH HEREIN, IN NO EVENT WILL ALUMINESS BE LIABLE FOR ANY LOST PROFITS, LOST SALES, OR FOR ANY CONSEQUENTIAL, DIRECT, INDIRECT, INCIDENTAL, SPECIAL, EXEMPLARY OR PUNITIVE DAMAGES OR FOR ANY OTHER DAMAGES OF ANY KIND OR NATURE.
7. Compliance. Aluminess cannot guarantee that its products comply with all Federal, State, and/or local laws. Purchaser is advised to review local vehicle codes for compatibility prior to purchase to ensure that the installation and use of any Aluminess products does not violate any applicable laws.
8. Warranty Claim Submission. Purchaser will responsible for returning any defective product to Aluminess for warranty consideration and purchaser may be responsible for all costs associated with shipping the product to and from Aluminess. Prior to returning any product for warranty, purchaser must contact Aluminess Products Inc. for proper authorization.