



TOURING SIDE STEP INSTALLATION INSTRUCTIONS

P/N 210687: 2007+ Mercedes Sprinter Touring Side Steps

Please read before beginning

- *Stainless steel hardware may bind together when tightening—It is recommended that you apply an anti-seize assembly lubricant to the threads of each bolt before assembly*
- *This installation requires two people*
- *Unless otherwise specified, refer to the general torque value at the end of the instructions for specified torque values.*



Required Tools

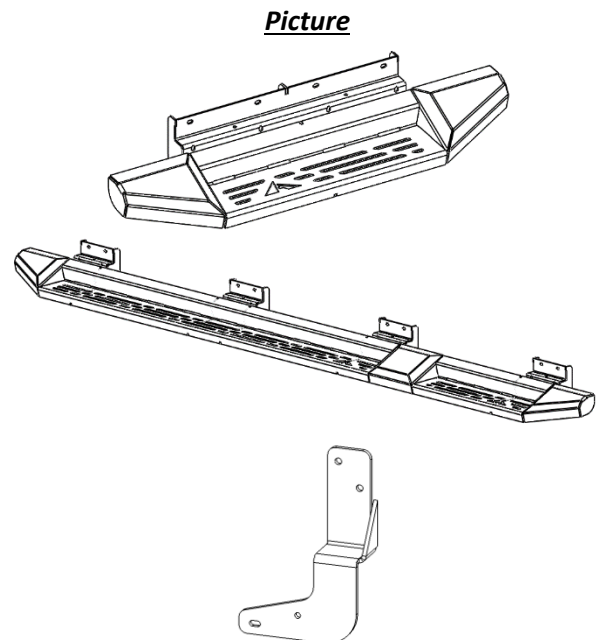
- *Drill with drill bits (3/16", 1/4", & 5/16")*
- *Standard wrench set*
- *Center punch or scribing tool*
- *Level*

Included Hardware:

<u>P/N</u>	<u>Description</u>	<u>Quantity</u>
70008	¼"-20 Nylock Nuts SS	18
70009	¼" x 5/8 Washer SS (.03" Thick)	36
70060	¼"-20 x 1" Bolt, Button Head, Socket Cap, SS,	18
70231	Self-Tapping, SS #14 x 1 1/2" Bolt	22
70246	Antiseize Packet, 2g	1

Included Parts:

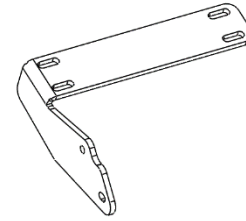
<u>PN</u>	<u>Description</u>	<u>Quantity</u>
N/A	Side Step, Driver's Side	1 ea
N/A	Side Step, Passenger's Side	1 ea
301757	Rear Most, Support Bracket	1 ea





301030.1 Driver's Side, 90 Degree Bracket

1 ea



Installation Instructions:

1. Hold up the passenger side step to the backside of the pinch weld with help from a second installer to verify that there are no obstructions on the mounting surfaces of the pinch. Slide the side steps forward or backwards until the middle shroud is aligned with the body seam at the back of the B pillar (Figure 1)



Figure 1: Side Step Alignment with B-Pillar Seam

2. Once the correct placement along the van has been located, fasten the upper vertical and horizontal flanges of the step brackets to the vehicle using the self-tapping hardware as shown in Figure 2. Place firm pressure on the step against the pinch weld and mating vehicle features to ensure that the steps are properly seated as they're fastened. There are three (3) self-tapping screws per bracket; one (1) vertically and two (2) horizontally installed.

PRO TIP: If the screws are having a hard time getting started, a 3/16" pilot hole can be drilled first to help get them started.



Figure 2: Step Bracket Installation Behind Pinch Weld

3. Ensure that the step is level (Figure 3).



Figure 3: Verification that the Step is Level

4. Mark the backside of the pinch weld on the van using the pre-cut holes on the step bracket as a template (Figure 4). Use a center punch to center the drilled hole in the slotted hole of the bracket. Drill through pinch weld using a 1/4" drill.

PRO TIP: Using a 1/4" drill for 1/4" bolt can make for a tight connection. Drill first, then test hardware for fitment. Opening the hole slightly may be necessary by either slightly angling the



drill while drilling in a circular motion, or going up to a 5/16" drill size.

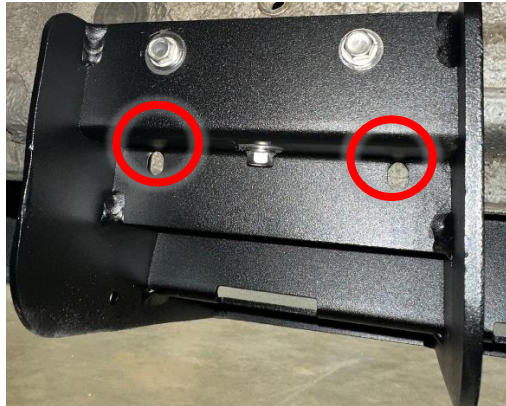


Figure 4: Marking Pinch Weld for Drilling

- Use 1/4"-20 hardware to fasten each bracket to the pinch weld as shown in Figure 5.



Figure 5: Pinch Weld Fastener Installation

- Grab the rear most support bracket and lay under the van at the end of the step. Bolt through the slot in the bracket and hole in the end cap using 1/4"-20 hardware as shown in Figure 6 below. Then drill a hole through the end cap using the second bracket hole as a guide.

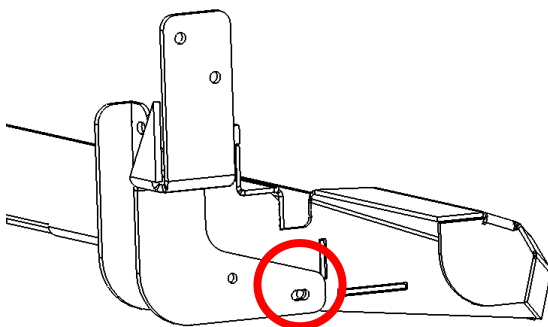


Figure 6: Rear Support Bracket Bottom Mounting

- Now using the two holes on top of the bracket as guides, drill through the triangular sub frame flange as shown and bolt through using the 1/4"-20 hardware again. See Figure 7 below.



Figure 7: Rear Support Bracket Upper Mounting

- Before installing the driver side step, make sure any of the protruding rubber coating on the underside of the vehicle is removed. You want the mounting surfaces to be relatively flat.
- Repeat Step 0 through Step 5 for the driver's side step with the following changes:
 - Line up the B-pillar seam with the inside of the rear shroud (Figure 8, arrow).
 - Position the front of the step and secure first, then move towards the rear, checking the step or level as you go.
 - Use six (6) self-tapping screws total for the upper vertical and horizontal flanges of the step brackets (Figure 8).
 - Use four (4) 1/4"-20 bolts total for the pinch weld fasteners (Figure 8, circles).

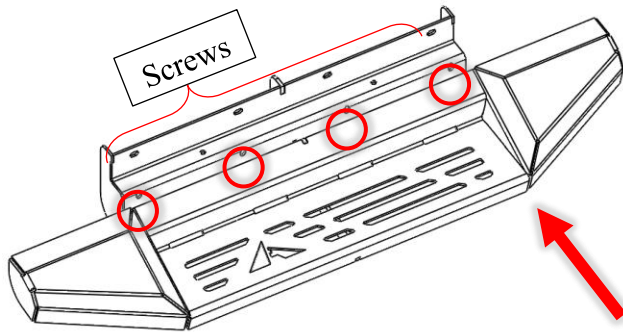


Figure 8: Driver's Side Step Install

- Loosely install the 90 degree bracket to the back of the rear bracing on the rear shroud. Use the pre-cut hole on the shroud bracing and the lower, slotted hole on the 90 degree bracket to loosely connect (Figure 9).

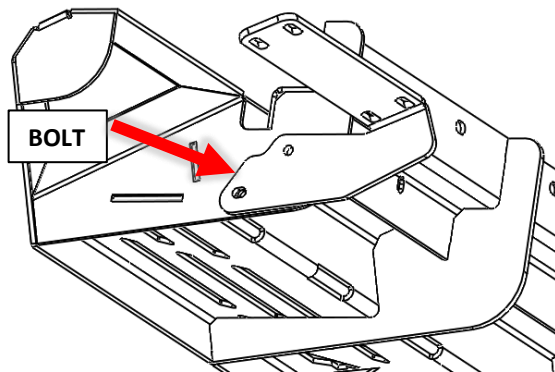


Figure 9: Installation of 90 Degree Bracket

- Align the slots on the 90 degree bracket with the underside of the angled, B-pillar bracing on the vehicle and fasten using self-tapping bolts into the van as shown in Figure 10 (four screws total).

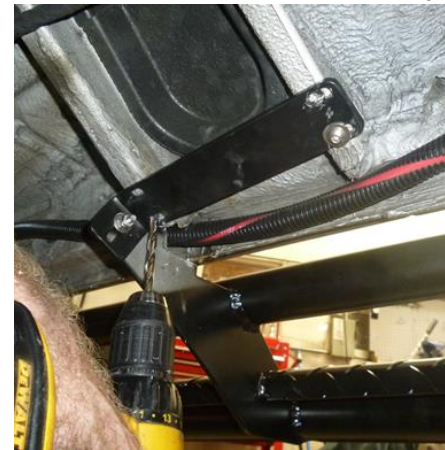


Figure 10: 90 Degree Bracket Installation onto Van

- Once the 90 degree bracket is bolted firmly onto the van, drill the second hole into the rear shroud bracing to permanently lock the rotation (Figure 11). Use a 1/4" drill bit and 1/4"-20 hardware to fasten together.

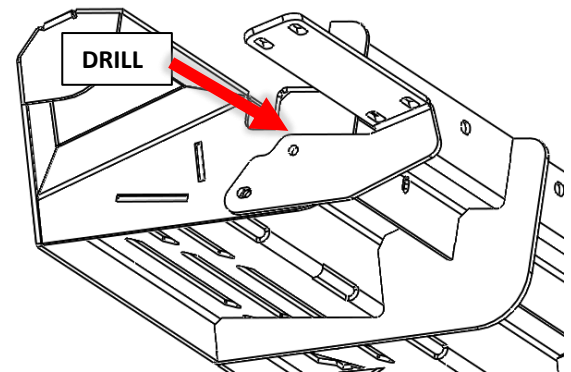


Figure 11: Drilled Hole to Lock Rotation of Step

- Double check that all mounting bracket fasteners are tight throughout the entire installation.
- Congratulations, you've completed the installation! Verify all mounting hardware remains tight after 100 miles and periodically thereafter. Enjoy!



General Torque Values			
Size	Stainless Steel	Zinc	Grade 8
#6-32	10 lb-ft	--	--
#8-32	18.4 lb-ft	--	--
#10-32	26.6 lb-ft	--	--
1/4"-20	5.3 lb-ft	7.8 lb-ft	9 lb-ft
5/16"-18	10.9 lb-ft	16 lb-ft	18 lb-ft
3/8"-16	19.4 lb-ft	28.3 lb-ft	33 lb-ft
7/16"-14	31 lb-ft	45 lb-ft	52 lb-ft
1/2"-13	47 lb-ft	69 lb-ft	80 lb-ft
M6	4.7 lb-ft	5.8 lb-ft	--
M8	11.3 lb-ft	14.1 lb-ft	--
M10	22.3 lb-ft	27.9 lb-ft	--
M12	38.9 lb-ft	48.7 lb-ft	--



Aluminess Products, Inc. (Aluminess) Warranty

1. Lifetime Warranty. Aluminess provides a lifetime warranty of its products to the original retail purchaser provided such products are installed correctly according to the official Aluminess installation instructions. Any modification to the original product design, function or use of any Aluminess products will void the Aluminess warranty. Aluminess will have sole discretion to determine warranty eligibility for any and all Aluminess products sold to any purchaser.
2. Limited Remedies. Subject to any limitations and exclusions described herein, and subject to Aluminess' determination of warranty eligibility, Aluminess will remedy defects in product materials and/or workmanship of any product by repairing or replacing such defective product, which shall be within Aluminess' sole discretion, without charge for parts or labor. Aluminess may elect in its sole discretion not to replace a defective product and issue the purchaser a refund equal to the purchase price of any defective product or purchaser may elect to receive a credit (equal to such refund) toward the purchase of new Aluminess products. Repair or replacement of a defective product or providing a refund or credit to purchaser will be purchaser's exclusive remedy under this warranty. Damage to a purchaser's vehicle, cargo and/or any other person or property is expressly excluded from the Aluminess warranty.
3. Modification. Aluminess products are designed to be mounted to factory equipped vehicles. Aftermarket additions to such vehicle may or may not require modification of an Aluminess product. The Aluminess warranty does not extend to any Aluminess products that are modified to fit around other otherwise accommodate or be compatible with any aftermarket vehicle accessories or alterations. Aluminess does not guarantee fitment with any other aftermarket accessories or modified vehicle, and it is up to purchaser to determine fitment prior to purchasing any Aluminess product.
4. Damage. Damage to Aluminess products due to normal wear and tear, including, but not limited to, cosmetic issues and superficial scratches, or structural damage to an Aluminess product in connection with any vehicle collisions or other structural degradation in connection with the use of such vehicle (on road or off road) will not be covered by the Aluminess warranty. Additionally, any product user's misuse, neglect, overloading, improper maintenance or improper installation or repair of any Aluminess products are not covered under the Aluminess warranty.
5. Use of the Products. Aluminess products are designed for off road vehicle use. Installing Aluminess products on a vehicle may exceed the factory designed capabilities of such vehicle and could potentially lead to vehicle damage. Aluminess will not be responsible for any damage caused to a purchaser or user's vehicle or any vehicle accessories caused by the use of any Aluminess products. It is to the sole responsibility of purchaser to inspect and ensure that the intended vehicle and Aluminess products are suitable and compatible for travel on road and off road. No seller nor any manufacturer of Aluminess products will be liable for any loss, damage or injury directly or indirectly arising from the use of any Aluminess products. Before using any Aluminess products, the purchaser or user will determine the suitability of the product(s) for their intended use(s) and the purchaser or user shall assume all responsibility and risk in connection therewith.
6. DISCLAIMER. THE ALUMINESS WARRANTY IS EXPRESSLY MADE IN LIEU OF ANY AND ALL OTHER WARRANTIES, AND EXCEPT FOR THE ALUMINESS WARRANTY SET FORTH HEREIN, ALUMINESS MAKES NO WARRANTY WHATSOEVER WITH RESPECT TO ANY ALUMINESS PRODUCT, INCLUDING ANY WARRANTY OF MERCHANTABILITY AND FITNESS FOR A PARTICULAR PURPOSE, WHETHER EXPRESS OR IMPLIED BY LAW, COURSE OF DEALING, COURSE OF PERFORMANCE, USAGE OF TRADE, OR OTHERWISE.
EXCEPT FOR PURCHASER'S LIMITED REMEDIES SET FORTH HEREIN, IN NO EVENT WILL ALUMINESS BE LIABLE FOR ANY LOST PROFITS, LOST SALES, OR FOR ANY CONSEQUENTIAL, DIRECT, INDIRECT, INCIDENTAL, SPECIAL, EXEMPLARY OR PUNITIVE DAMAGES OR FOR ANY OTHER DAMAGES OF ANY KIND OR NATURE.
7. Compliance. Aluminess cannot guarantee that its products comply with all Federal, State, and/or local laws. Purchaser is advised to review local vehicle codes for compatibility prior to purchase to ensure that the installation and use of any Aluminess products does not violate any applicable laws.
8. Warranty Claim Submission. Purchaser will responsible for returning any defective product to Aluminess for warranty consideration and purchaser may be responsible for all costs associated with shipping the product to and from Aluminess. Prior to returning any product for warranty, purchaser must contact Aluminess Products Inc. for proper authorization.