



# Ladder Installation Instructions

P/N 210744: 2007+ Mercedes Sprinter Ladder Mount for Cruiser Roof Rack

## Before you begin:

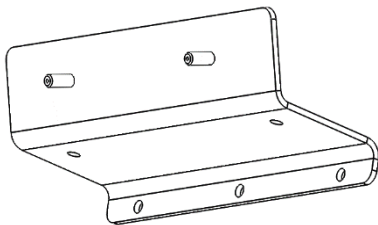
- *Stainless steel hardware may bind together when tightening — apply an anti-seize assembly lubricant to the threads of each bolt before assembly*
- *The ladder is designed to fit in front of the rear wheel of the van.*
- *Unless otherwise specified, refer to the general torque value at the end of the instructions for specified torque values*



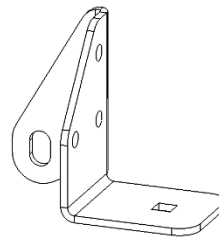
## Required Tools:

- Standard and metric wrench set
- Standard and metric socket set
- Flat head screwdriver
- Painter's Masking Tape

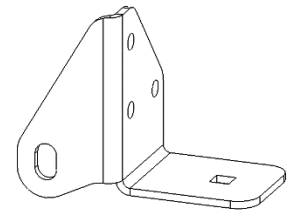
## Included Subassemblies:



1X - Lower Attachment Bracket



1X - 350541 Left Upper Bracket



1X - 350541.1 Right Upper Bracket

## Included Hardware:

<b>P/N</b>	<b>Description</b>	<b>Quantity</b>
70008	¼"-20 nylon-locking nut	11
70009	¼" ID washer	20
70060	¼"-20 x 1" button head screw, stainless steel	9
70346	5/16"-18 Nylon-locking nut, Black Oxide	4
70345	5/16" ID Washer, Black Oxide	4
70201	5/16"-18 x 1" socket cap screw, stainless steel	2
70369	5/16" -18 X 3/4", Carriage Bolt, Black Oxide	2
70246	Antiseize Packet, 2g	1



*NOTE: If you have purchased an accompanying pair of nerf bars, it is easier to install the ladder **first**.*

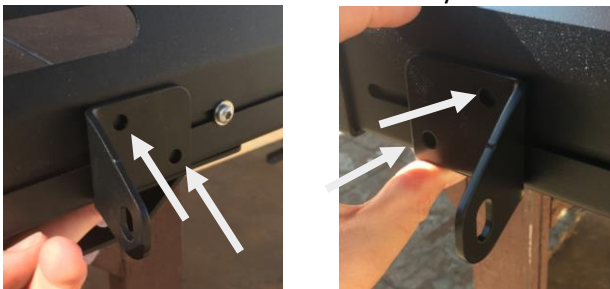
*NOTE: This ladder will only work in conjunction with Aluminess' Sprinter Cruiser Roof Rack*

Upper Attachment Assembly:

1. Locate the desired location on the van for the ladder. Find the location of each upper attachment bracket along the side rail of the cruiser roof rack based on the width of the ladder.

PRO TIP: Face the bracket towards the inside of your ladder for a more polished finished product.

2. Measure the bracket-to-bracket distance to ensure the ladder will fit correctly.



**Figure 1: Upper Attachment Brackets**

3. Attach the upper bracket using the 1/4 hardware through the holes marked above, and the 5/16" carriage bolt through the bottom of the bracket. Leave all of this hardware loose for now.
4. Attach the top of the ladder using the 5/16" hardware through the bracket as shown in Figure 2.



**Figure 2: Ladder Attachment to Upper Brackets**

5. When desired location is achieved, tighten down all bolts started in steps 3 and 4.

Bottom Bracket Assembly:

6. With the ladder attached at the top, locate the desired position of the lower attachment bracket. Ensure the ladder is straight compared to the vehicle before finalizing lower bracket placement.
7. Hold the lower attachment bracket up to the vehicle body using C-clamps or spring clips. Be sure to align the bottom three holes with the pinch weld.



**Figure 3: Lower Attachment Installation**

8. Using a 1/4" drill bit, make three holes through the pinch weld using the bracket as a template for alignment.
9. Install the 1/4" cap screws, washers, and nuts into the drilled holes and tighten.
10. Place ladder against lower attachment bracket making sure the bottom of the ladder aligns over the threaded studs.
11. Install 1/4" washers and nuts onto the threaded studs.
12. While applying downward pressure to the ladder, tighten the 1/4"-20 nuts fixing the ladder in place.



Figure 4: Lower Attachment Assembly



13. Visually inspect the position of the ladder—if satisfied, tighten down all bolts to at least 10 ft-lbs. of torque.
14. Check all fasteners for fitment after 50 miles of driving, and every 1000 miles afterwards. Enjoy!



<b>General Torque Values</b>			
<b>Size</b>	<b>Stainless Steel</b>	<b>Zinc</b>	<b>Grade 8</b>
#6-32	10 lb-ft	--	--
#8-32	18.4 lb-ft	--	--
#10-32	26.6 lb-ft	--	--
1/4"-20	5.3 lb-ft	7.8 lb-ft	9 lb-ft
5/16"-18	10.9 lb-ft	16 lb-ft	18 lb-ft
3/8"-16	19.4 lb-ft	28.3 lb-ft	33 lb-ft
7/16"-14	31 lb-ft	45 lb-ft	52 lb-ft
1/2"-13	47 lb-ft	69 lb-ft	80 lb-ft
M6	4.7 lb-ft	5.8 lb-ft	--
M8	11.3 lb-ft	14.1 lb-ft	--
M10	22.3 lb-ft	27.9 lb-ft	--
M12	38.9 lb-ft	48.7 lb-ft	--



Aluminess Products, Inc. (Aluminess) Warranty

1. Lifetime Warranty. Aluminess provides a lifetime warranty of its products to the original retail purchaser provided such products are installed correctly according to the official Aluminess installation instructions. Any modification to the original product design, function or use of any Aluminess products will void the Aluminess warranty. Aluminess will have sole discretion to determine warranty eligibility for any and all Aluminess products sold to any purchaser.
2. Limited Remedies. Subject to any limitations and exclusions described herein, and subject to Aluminess' determination of warranty eligibility, Aluminess will remedy defects in product materials and/or workmanship of any product by repairing or replacing such defective product, which shall be within Aluminess' sole discretion, without charge for parts or labor. Aluminess may elect in its sole discretion not to replace a defective product and issue the purchaser a refund equal to the purchase price of any defective product or purchaser may elect to receive a credit (equal to such refund) toward the purchase of new Aluminess products. Repair or replacement of a defective product or providing a refund or credit to purchaser will be purchaser's exclusive remedy under this warranty. Damage to a purchaser's vehicle, cargo and/or any other person or property is expressly excluded from the Aluminess warranty.
3. Modification. Aluminess products are designed to be mounted to factory equipped vehicles. Aftermarket additions to such vehicle may or may not require modification of an Aluminess product. The Aluminess warranty does not extend to any Aluminess products that are modified to fit around other otherwise accommodate or be compatible with any aftermarket vehicle accessories or alterations. Aluminess does not guarantee fitment with any other aftermarket accessories or modified vehicle, and it is up to purchaser to determine fitment prior to purchasing any Aluminess product.
4. Damage. Damage to Aluminess products due to normal wear and tear, including, but not limited to, cosmetic issues and superficial scratches, or structural damage to an Aluminess product in connection with any vehicle collisions or other structural degradation in connection with the use of such vehicle (on road or off road) will not be covered by the Aluminess warranty. Additionally, any product user's misuse, neglect, overloading, improper maintenance or improper installation or repair of any Aluminess products are not covered under the Aluminess warranty.
5. Use of the Products. Aluminess products are designed for off road vehicle use. Installing Aluminess products on a vehicle may exceed the factory designed capabilities of such vehicle and could potentially lead to vehicle damage. Aluminess will not be responsible for any damage caused to a purchaser or user's vehicle or any vehicle accessories caused by the use of any Aluminess products. It is to the sole responsibility of purchaser to inspect and ensure that the intended vehicle and Aluminess products are suitable and compatible for travel on road and off road. No seller nor any manufacturer of Aluminess products will be liable for any loss, damage or injury directly or indirectly arising from the use of any Aluminess products. Before using any Aluminess products, the purchaser or user will determine the suitability of the product(s) for their intended use(s) and the purchaser or user shall assume all responsibility and risk in connection therewith.
6. DISCLAIMER. THE ALUMINESS WARRANTY IS EXPRESSLY MADE IN LIEU OF ANY AND ALL OTHER WARRANTIES, AND EXCEPT FOR THE ALUMINESS WARRANTY SET FORTH HEREIN, ALUMINESS MAKES NO WARRANTY WHATSOEVER WITH RESPECT TO ANY ALUMINESS PRODUCT, INCLUDING ANY WARRANTY OF MERCHANTABILITY AND FITNESS FOR A PARTICULAR PURPOSE, WHETHER EXPRESS OR IMPLIED BY LAW, COURSE OF DEALING, COURSE OF PERFORMANCE, USAGE OF TRADE, OR OTHERWISE.  
  
EXCEPT FOR PURCHASER'S LIMITED REMEDIES SET FORTH HEREIN, IN NO EVENT WILL ALUMINESS BE LIABLE FOR ANY LOST PROFITS, LOST SALES, OR FOR ANY CONSEQUENTIAL, DIRECT, INDIRECT, INCIDENTAL, SPECIAL, EXEMPLARY OR PUNITIVE DAMAGES OR FOR ANY OTHER DAMAGES OF ANY KIND OR NATURE.
7. Compliance. Aluminess cannot guarantee that its products comply with all Federal, State, and/or local laws. Purchaser is advised to review local vehicle codes for compatibility prior to purchase to ensure that the installation and use of any Aluminess products does not violate any applicable laws.
8. Warranty Claim Submission. Purchaser will responsible for returning any defective product to Aluminess for warranty consideration and purchaser may be responsible for all costs associated with shipping the product to and from Aluminess. Prior to returning any product for warranty, purchaser must contact Aluminess Products Inc. for proper authorization.