

## REAR BUMPER INSTALLATION INSTRUCTIONS *Ford Transit -Dually Tire*

### Please read before beginning

- *Stainless steel hardware may bind together when tightening—it is recommended that you apply an anti-seize assembly lubricant to the threads of each bolt before assembly*
- *This installation requires three people*

### Required tools

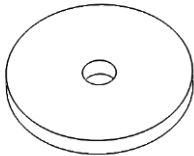
- Standard and metric wrench set
- Allen wrench set
- Torx Driver Set
- Flat-head screwdriver (used to remove stock plastic fasteners)
- Loctite



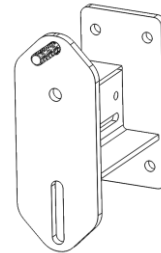
### Included Hardware/Parts

### Quantity

- |   |   |
|---|---|
| • 70090 – 7/16-14 x 4 ½" Hex Head Bolt, Grade 8 | 4 |
| • 70056 – 7/16-14 Nylock Nuts, Grade 8          | 4 |
| • 70057 – 7/16" Flat Washers, Zinc Plated       | 8 |
| • 70257 – M10-1.5 Left Hand Nuts                | 2 |
| • Antiseize Packet, 2g                          | 1 |



x2  
**Magnet  
Replacement Puck**



x1  
**Tire Plate Assembly**

### Installation Instructions

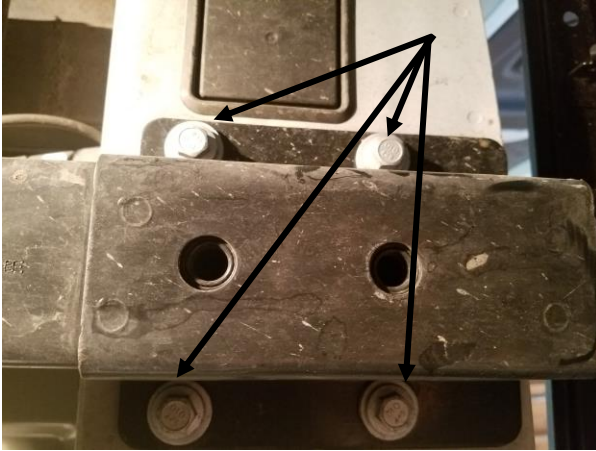
1. Remove the rear plastic bumper cover by removing the torx head screws bolting it to the vehicle, there should be 6 of these (**Figure 1**).
2. Next, remove the plastic popper fasteners bolting the middle plastic bumper cover to the two corner plastic pieces. You can use a flat head screwdriver to help pry them loose.

**Note:** you will only need to remove the *middle* plastic bumper cover. The corner plastic pieces must remain on the vehicle.



**Figure 1.** Removal of torx head fasteners on plastic bumper cover.

3. Remove the stock rear bumper by first removing the 8 hex flange head bolts going up underneath the vehicle (**Figure 2**). There are 4 on each side. Keep all 8 of these bolts, you will reuse them for installation of your Aluminess bumper.



**Figure 2.** Removal of 8 bolts to the frame (only one side shown).

4. Next remove the 4 cross bolts (2 on each side) going through the blades and the vehicle frame (**Figure 3**). These are the last fasteners holding the bumper in place, so be careful when sliding the cross bolts out of the frame so as not to let the bumper fall on top of you.



**Note:** You may have a backup beeper speaker held in place by these bolts. You can discard the bolts, but hold onto the speaker as you will hold it in place using the replacement bolts provided in this hardware kit.



**Figure 4.** Picture of your vehicle after stock bumper removal.

**Notes for Aluminess bumper installation:**

5. Before installing your Aluminess bumper, liberally apply tape to the corner stock plastic pieces on the rear of the vehicle. This will prevent the Aluminess bumper from scraping the plastic upon installation (see **Figure 5**).
6. It is also good practice to fix the swing arms in their locked-open position – this will help avoid interference and possibly scratching your vehicle body.
7. Be sure to install the Aluminess bumper with your rear van doors closed shut. If your van doors are locked all the way open, it will be impossible to close them after you've installed your bumper.

**Bumper Installation**

8. With the help of two other people, lift the bumper into place to install on the vehicle. The mounting structure of your Aluminess bumper shares the same bolt locations from which you removed your stock bumper.
9. Bolt the 7/16" hardware cross-bolting through the frame tightening to 63 ft-lb torque, and reattaching your backup speaker if needed.
10. Use the 8 factory flange-head bolts to bolt up through the bottom of the frame, tightening these bolts to 81 ft-lb torque.
11. Tighten down all mounting bolts.



**Figure 3.** Tape applied to plastic corner pieces to prevent scratching. The swing arm has been removed and door is open to clearly show the location of the tape, although THIS IS NOT THE CONFIGURATION IN WHICH YOU SHOULD INSTALL YOUR ALUMINESS BUMPER.

**Magnet Replacement (if applicable)**

12. If your vehicle is equipped with magnets, they may interfere with your swing arms in the closed position on the door. Use the provided magnet replacement pucks to replace the door magnets (side magnets are ok to leave on).
13. To remove the magnet, simply twist the outer plastic piece and pull until it comes off. Using a crescent-wrench, remove the magnet from the door (*note, this is a left-handed thread, so you'll need to twist it clockwise to loosen*).
14. Slide your Aluminess magnet replacement over the stud, apply Loctite to the stud, and cap with the provided metric nuts.
15. The bumper is now installed—check the mounting hardware after 100 miles of driving to ensure that nothing has come loose due to vibration.



**Figure 5.** Rest tire on both support arms (before tightening the lugs or U-bolts down). If your tire is “floating” above these support arms, you may damage your swing arm while driving.

**Note for Tire Mount Installation**

### Aluminess Products, Inc. (Aluminess) Warranty

1. Lifetime Warranty. Aluminess provides a lifetime warranty of its products to the original retail purchaser provided such products are installed correctly according to the official Aluminess installation instructions. Any modification to the original product design, function or use of any Aluminess products will void the Aluminess warranty. Aluminess will have sole discretion to determine warranty eligibility for any and all Aluminess products sold to any purchaser.
2. Limited Remedies. Subject to any limitations and exclusions described herein, and subject to Aluminess' determination of warranty eligibility, Aluminess will remedy defects in product materials and/or workmanship of any product by repairing or replacing such defective product, which shall be within Aluminess' sole discretion, without charge for parts or labor. Aluminess may elect in its sole discretion not to replace a defective product and issue the purchaser a refund equal to the purchase price of any defective product or purchaser may elect to receive a credit (equal to such refund) toward the purchase of new Aluminess products. Repair or replacement of a defective product or providing a refund or credit to purchaser will be purchaser's exclusive remedy under this warranty. Damage to a purchaser's vehicle, cargo and/or any other person or property is expressly excluded from the Aluminess warranty.
3. Modification. Aluminess products are designed to be mounted to factory equipped vehicles. Aftermarket additions to such vehicle may or may not require modification of an Aluminess product. The Aluminess warranty does not extend to any Aluminess products that are modified to fit around other otherwise accommodate or be compatible with any aftermarket vehicle accessories or alterations. Aluminess does not guarantee fitment with any other aftermarket accessories or modified vehicle, and it is up to purchaser to determine fitment prior to purchasing any Aluminess product.
4. Damage. Damage to Aluminess products due to normal wear and tear, including, but not limited to, cosmetic issues and superficial scratches, or structural damage to an Aluminess product in connection with any vehicle collisions or other structural degradation in connection with the use of such vehicle (on road or off road) will not be covered by the Aluminess warranty. Additionally, any product user's misuse, neglect, overloading, improper maintenance or improper installation or repair of any Aluminess products are not covered under the Aluminess warranty.
5. Use of the Products. Aluminess products are designed for off road vehicle use. Installing Aluminess products on a vehicle may exceed the factory designed capabilities of such vehicle and could potentially lead to vehicle damage. Aluminess will not be responsible for any damage caused to a purchaser or user's vehicle or any vehicle accessories caused by the use of any Aluminess products. It is to the sole responsibility of purchaser to inspect and ensure that the intended vehicle and Aluminess products are suitable and compatible for travel on road and off road. No seller nor any manufacturer of Aluminess products will be liable for any loss, damage or injury directly or indirectly arising from the use of any Aluminess products. Before using any Aluminess products, the purchaser or user will determine the suitability of the product(s) for their intended use(s) and the purchaser or user shall assume all responsibility and risk in connection therewith.
6. DISCLAIMER. THE ALUMINESS WARRANTY IS EXPRESSLY MADE IN LIEU OF ANY AND ALL OTHER WARRANTIES, AND EXCEPT FOR THE ALUMINESS WARRANTY SET FORTH HEREIN, ALUMINESS MAKES NO WARRANTY WHATSOEVER WITH RESPECT TO ANY ALUMINESS PRODUCT, INCLUDING ANY WARRANTY OF MERCHANTABILITY AND FITNESS FOR A PARTICULAR PURPOSE, WHETHER EXPRESS OR IMPLIED BY LAW, COURSE OF DEALING, COURSE OF PERFORMANCE, USAGE OF TRADE, OR OTHERWISE. EXCEPT FOR PURCHASER'S LIMITED REMEDIES SET FORTH HEREIN, IN NO EVENT WILL ALUMINESS BE LIABLE FOR ANY LOST PROFITS, LOST SALES, OR FOR ANY CONSEQUENTIAL, DIRECT, INDIRECT, INCIDENTAL, SPECIAL, EXEMPLARY OR PUNITIVE DAMAGES OR FOR ANY OTHER DAMAGES OF ANY KIND OR NATURE.
7. Compliance. Aluminess cannot guarantee that its products comply with all Federal, State, and/or local laws. Purchaser is advised to review local vehicle codes for compatibility prior to purchase to ensure that the installation and use of any Aluminess products does not violate any applicable laws.
8. Warranty Claim Submission. Purchaser will responsible for returning any defective product to Aluminess for warranty consideration and purchaser may be responsible for all costs associated with shipping the product to and from Aluminess. Prior to returning any product for warranty, purchaser must contact Aluminess Products Inc. for proper authorization.