

# Reinforcement Plate Installation Instructions

P/N 2106XX Jeep, Wrangler, JL, Reinforcement Plate

**Before you begin:**

- *Stainless steel (SS) hardware may bind together when tightening — apply an anti-seize assembly lubricant to the threads of each SS bolt before assembly.*
- *This installation may require two or more people*

**Required Tools:**

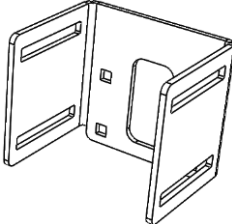
- Metric Wrench Set
- Metric Socket set
- Torx bit set

**Include Hardware:**

<b><i>P/N</i></b>	<b><i>Description</i></b>	<b><i>Quantity</i></b>
70024	3/8-16, Nylock Nut, SS	8
70028	Washer, SS	12
70348	3/8-16 X 1 ¼" Carriage Bolt, SS	8
70356	Hex Head Bolt, M10 -1.5 X 60 mm, SS	4
70357	M10 Lock Washer, SS	4



**Additional Parts Included:**

<b><i>PN</i></b>	<b><i>Description</i></b>	<b><i>Quantity</i></b>	<b><i>Picture</i></b>
301611.2	Adjustable Back Spacing Bracket	1	
301611.3	Lug Nut and Camera Mount	1	
301617	Camera Housing	1	

*Installation Instructions:*

1. Remove the spare tire.
2. Unfasten the two torx bolts in the center using a T25.



*Figure 1: Removing Torx Bolts*

3. Push in the threaded studs, so that the threaded stud assembly falls into the tire carrier.
4. Push in the plastic camera housing behind tire carrier housing by applying pressure.  
NOTE: If it doesn't give wedge a flat head screw driver in between the tire carrier housing and tap out with a hammer.



*Figure 2: Wedging Flat Head In Camera Housing*

5. Use a 13mm socket and remove the 8 bolts holding the tire carrier in place. Be careful to not let the tire carrier drop to avoid damaging the wiring harnesses.



*Figure 3 Removing Tire Carrier*

6. Remove the 3 small torx screw holding the camera in place



*Figure 4: Removing Camera From Housing*

7. Remove the wiring harness from the camera, and set the camera aside.



Figure 5: Disconnecting Wiring Harness From Camera

8. Remove the four torx bolts holding the brake light bracket to the tire mount. Then remove the seven torx bolts covering the wiring harness to the brake light.



Figure 6: Accessing 3<sup>rd</sup> Brake Light Wiring Harness

9. Remove the brake light wiring harness, and place it aside with the camera wiring harness.  
NOTE: You might have to remove the torx bolts holding the camera to be able to get access to the harness clip.

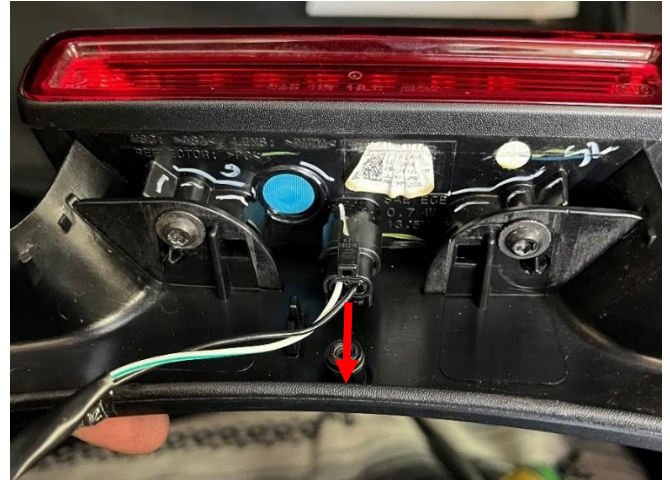


Figure 7: Removing 3<sup>rd</sup> Brake Light Wiring Harness

10. Fasten the adjustable backspacing plate onto the reinforcement plate at the desired tire location using the 3/8" carriage bolts, washers and nylock nuts.

NOTE: The lowest tire setting is for a 33" tire and the highest setting is for a 37" tire.

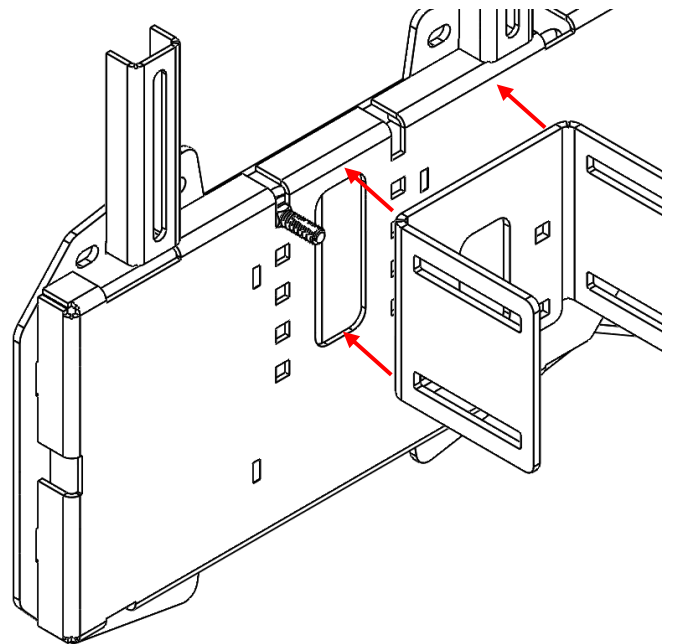


Figure 8: Installing Adjustable Back Spacing

11. Remove the hinge hardware using a T55 torx bit.  
NOTE: The door will move, make sure it is shut and supported to minimize movement.

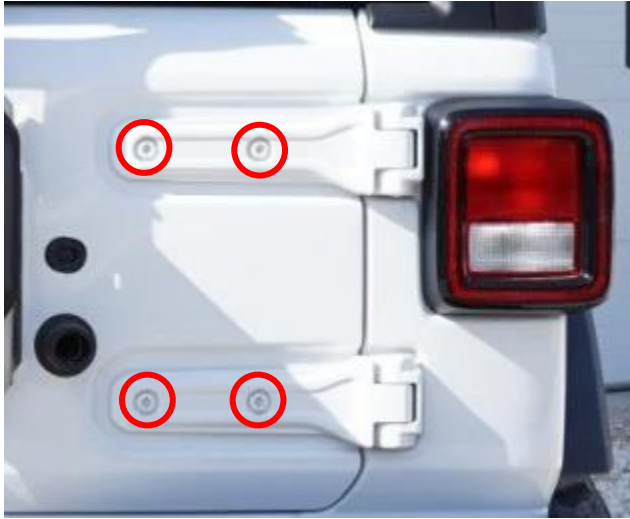


Figure 9: Removing Hinge Hardware

12. Feed the camera and brake light harness through the driver side port on the reinforcement plate.

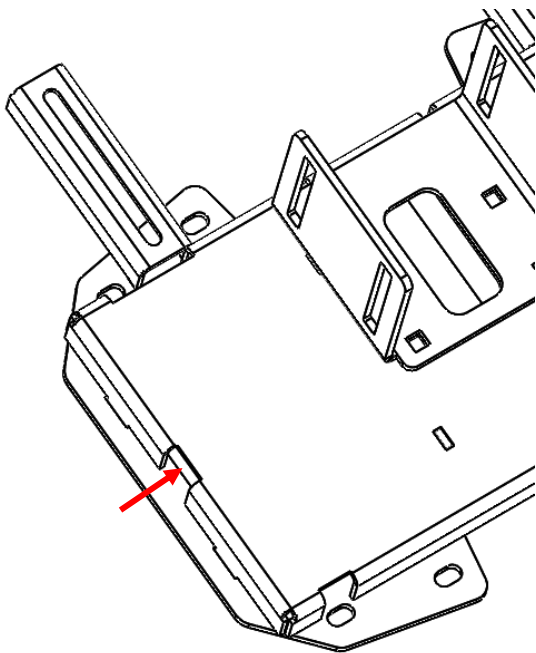


Figure 10: Wire Relocation Slot

13. Slide the Reinforcement plate over the factory vents and line up the mounting locations.
14. Replace the factory hinge hardware with the provided 10mm bolt, washer, and lock washer. Make sure that the tailgate remains in the same factory location.

15. Reuse the factory hardware and fasten the 8 bolts to hold the tire reinforcement in place.
16. Feed the wire housings through the appropriate slots as shown below.

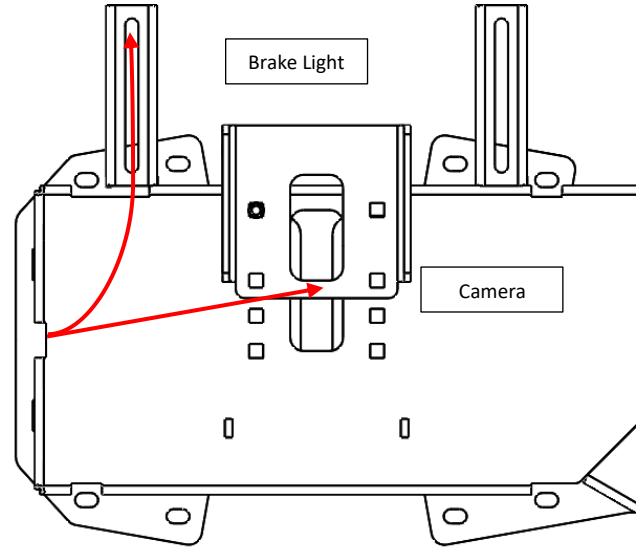


Figure 11: Wire Relocation Path

17. Reconnect the camera housing and fasten the camera using the small torx bolts
18. Assemble the camera housing as shown in the diagram below.

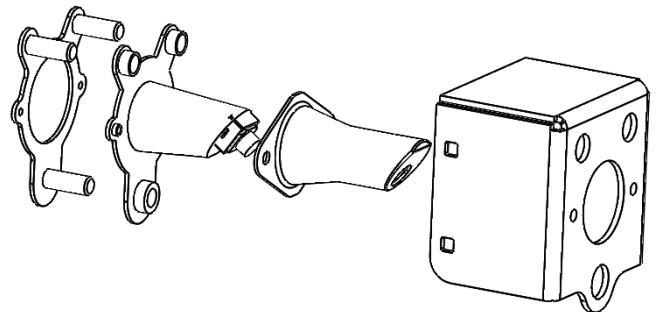


Figure 12: Camera Sub-Assembly

19. Reuse the torx bolts that were removed in step 2 and fasten the camera housing assembly.

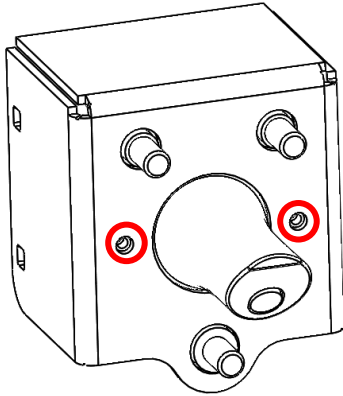


Figure 13: Tightening New Camera Sub-Assembly

20. Loosely fasten the new lug nut mount using four carriage bolts. Then, measure the backspacing of your spare tire and adjust the tire mount back spacing accordingly.



Figure 14: Measuring Backspacing

21. Once the backspacing is at the desired location fully tighten the carriage bolts using the 3/8 washers and nylock nuts.
22. Run the brake light wiring harness back to the third brake light assembly and cover up the exposed wiring using the torx bolts that were originally removed.
23. Slide the 3<sup>rd</sup> brake light assembly into the slots and using a washer and the factory hardware, fasten the assembly into place.

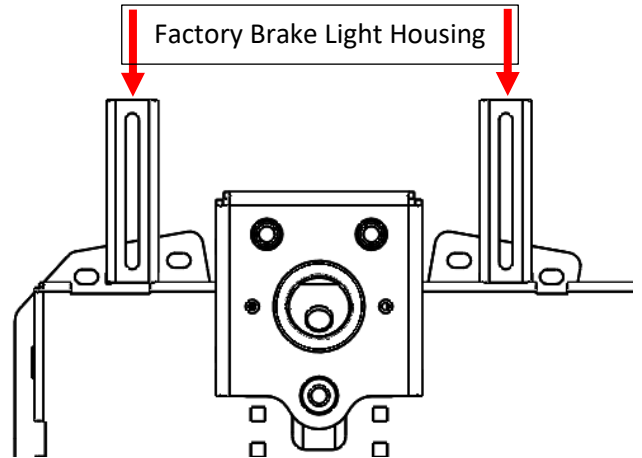


Figure 15: Installing Factory Brake Light Harness

24. Ensure all hardware is tightened, and snap in round plugs over the 10mm hardware holes.

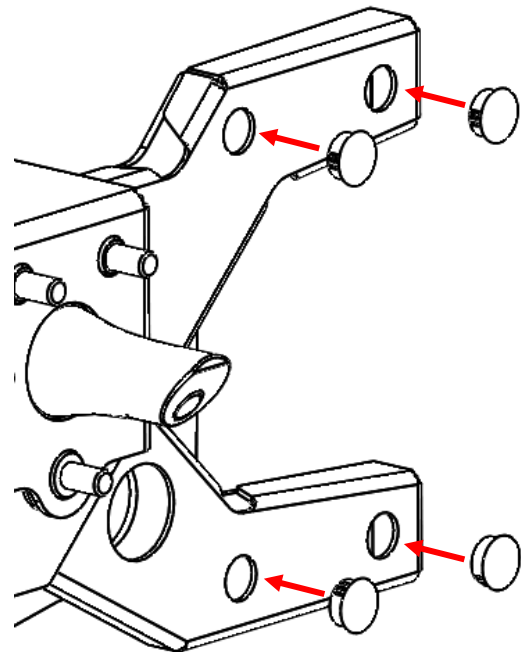


Figure 16: Capping off exposed hardware

25. Place spare tire onto tire carrier and tighten down. Ensure that there is contact between the spare tire, reinforcement plate and rubber stoppers.



Aluminess Products, Inc. (Aluminess) Warranty

1. Lifetime Warranty. Aluminess provides a lifetime warranty of its products to the original retail purchaser provided such products are installed correctly according to the official Aluminess installation instructions. Any modification to the original product design, function or use of any Aluminess products will void the Aluminess warranty. Aluminess will have sole discretion to determine warranty eligibility for any and all Aluminess products sold to any purchaser.
2. Limited Remedies. Subject to any limitations and exclusions described herein, and subject to Aluminess' determination of warranty eligibility, Aluminess will remedy defects in product materials and/or workmanship of any product by repairing or replacing such defective product, which shall be within Aluminess' sole discretion, without charge for parts or labor. Aluminess may elect in its sole discretion not to replace a defective product and issue the purchaser a refund equal to the purchase price of any defective product or purchaser may elect to receive a credit (equal to such refund) toward the purchase of new Aluminess products. Repair or replacement of a defective product or providing a refund or credit to purchaser will be purchaser's exclusive remedy under this warranty. Damage to a purchaser's vehicle, cargo and/or any other person or property is expressly excluded from the Aluminess warranty.
3. Modification. Aluminess products are designed to be mounted to factory equipped vehicles. Aftermarket additions to such vehicle may or may not require modification of an Aluminess product. The Aluminess warranty does not extend to any Aluminess products that are modified to fit around other otherwise accommodate or be compatible with any aftermarket vehicle accessories or alterations. Aluminess does not guarantee fitment with any other aftermarket accessories or modified vehicle, and it is up to purchaser to determine fitment prior to purchasing any Aluminess product.
4. Damage. Damage to Aluminess products due to normal wear and tear, including, but not limited to, cosmetic issues and superficial scratches, or structural damage to an Aluminess product in connection with any vehicle collisions or other structural degradation in connection with the use of such vehicle (on road or off road) will not be covered by the Aluminess warranty. Any product user's misuse, neglect, overloading, improper maintenance or improper installation or repair of any Aluminess products are not covered under the Aluminess warranty. Furthermore, broken studs are not to be covered under warranty, anti-seize and proper torque specs must be followed. Replacement kits may be delivered to the customer upon request at an additional cost.
5. Use of the Products. Aluminess products are designed for off road vehicle use. Installing Aluminess products on a vehicle may exceed the factory designed capabilities of such vehicle and could potentially lead to vehicle damage. Aluminess will not be responsible for any damage caused to a purchaser or user's vehicle or any vehicle accessories caused by the use of any Aluminess products. It is to the sole responsibility of purchaser to inspect and ensure that the intended vehicle and Aluminess products are suitable and compatible for travel on road and off road. No seller nor any manufacturer of Aluminess products will be liable for any loss, damage or injury directly or indirectly arising from the use of any Aluminess products. Before using any Aluminess products, the purchaser or user will determine the suitability of the product(s) for their intended use(s) and the purchaser or user shall assume all responsibility and risk in connection therewith.
6. DISCLAIMER. THE ALUMINESS WARRANTY IS EXPRESSLY MADE IN LIEU OF ANY AND ALL OTHER WARRANTIES, AND EXCEPT FOR THE ALUMINESS WARRANTY SET FORTH HEREIN, ALUMINESS MAKES NO WARRANTY WHATSOEVER WITH RESPECT TO ANY ALUMINESS PRODUCT, INCLUDING ANY WARRANTY OF MERCHANTABILITY AND FITNESS FOR A PARTICULAR PURPOSE, WHETHER EXPRESS OR IMPLIED BY LAW, COURSE OF DEALING, COURSE OF PERFORMANCE, USAGE OF TRADE, OR OTHERWISE.  
  
EXCEPT FOR PURCHASER'S LIMITED REMEDIES SET FORTH HEREIN, IN NO EVENT WILL ALUMINESS BE LIABLE FOR ANY LOST PROFITS, LOST SALES, OR FOR ANY CONSEQUENTIAL, DIRECT, INDIRECT, INCIDENTAL, SPECIAL, EXEMPLARY OR PUNITIVE DAMAGES OR FOR ANY OTHER DAMAGES OF ANY KIND OR NATURE.
7. Compliance. Aluminess cannot guarantee that its products comply with all Federal, State, and/or local laws. Purchaser is advised to review local vehicle codes for compatibility prior to purchase to ensure that the installation and use of any Aluminess products does not violate any applicable laws.
8. Warranty Claim Submission. Purchaser will responsible for returning any defective product to Aluminess for warranty consideration and purchaser may be responsible for all costs associated with shipping the product to and from Aluminess. Prior to returning any product for warranty, purchaser must contact Aluminess Products Inc. for proper authorization.