



## **Installation Instructions**

Dodge Sprinter 07+ Track Mount Ladder

### **Hardware**

<u>Part No - Description</u>	<u>Quantity</u>
• 70009 – ¼ x 5/8" Washer Stainless Steel (.03" Thick).....	8
• 70008 – ¼-20 Nylock Nuts Stainless Steel .....	4
• 70014 – ¼-20 x 1" Button Head Cap Screw Stainless Steel .....	4
• Aluminum Plate .....	1
• Roof Clip Assembly	
• Aluminum L-Bracket.....	2
• Gutter bracket with welded-in stud.....	2
• 70014 – ¼-20 x 1" Button Head Cap Screw Stainless Steel.....	2
• 70009 – ¼ x 5/8" Washer Stainless Steel (.03" Thick).....	4
• 70008 – ¼ -20 Nylock Nuts Stainless Steel.....	2

### **Notes**

- Stainless Steel nuts and bolts may bind permanently together if installed incorrectly; to avoid this it is recommended to apply a small amount of lubricant to bolt threads before installing (wax, never cease, etc.)
- The ladder is designed to fit in front of the rear wheel of the van.

### **Installation Procedure**

1. Fastening the top of the ladder
  - a. Slide the gutter brackets into the roof gutter, with studs pointing upwards
  - b. Install L-bracket onto gutter bracket and tighten the washer and nut over the L-bracket, loose enough to slide the brackets back and forth (see Figure 2)
  - c. Position the ladder where you would like it to sit on the car
  - d. Clamp the top of the ladder to the L-brackets using C-clamps or spring clips with L-brackets on outside face of ladder (see Figure 4)
  - e. Using a ¼" drill bit, drill through the ladder and L-bracket on both sides
  - f. Install the ¼" bolts, washers, and nuts and tighten by hand—do not torque down bolts yet



**Figure 1: Installed ladder**

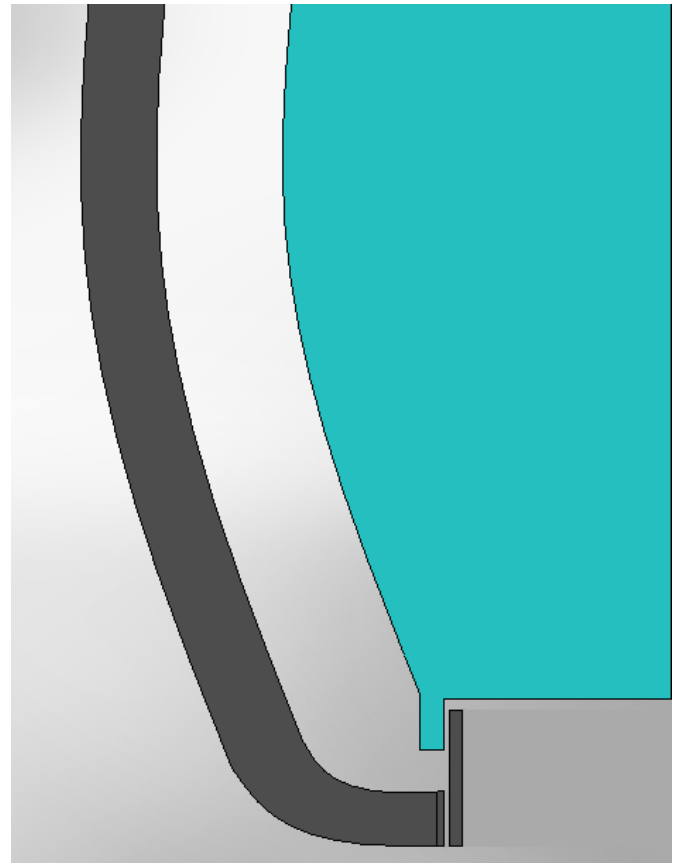


**Figure 2: Brackets installed on gutter**

2. Hold the aluminum plate in place against the inside of the vehicle body using C-clamps or spring clips.
3. Using a  $\frac{1}{4}$ " drill bit, make two holes through the aluminum plate into the vehicle body.
4. Install the  $\frac{1}{4}$ " cap screws, washers, and nuts into the drilled holes and tighten by hand.
5. Place ladder against aluminum plate.
6. Using a  $\frac{1}{4}$ " drill bit, make two holes through the ladder, into the aluminum plate.
7. Install the  $\frac{1}{4}$ " cap screws, washers, and nuts into the drilled holes and tighten by hand.
8. Visually inspect the position of the ladder—if satisfied, tighten down all the bolts with about 10 lb-ft of torque.
9. Check all fasteners for fitment after 50 miles of driving, and every 1000 miles afterwards.



**Figure 4: Ladder installed on roof gutter**



**Figure 3: Drawing of van bottom with ladder seen from rear of vehicle**